

# UO.2

What's New in Oil Again:

**Refreshing the  
Used Oil Payment Program**

Wednesday, November 2, 2016



*Certified Collection  
Centers*

and

*Oil Payment  
Program*

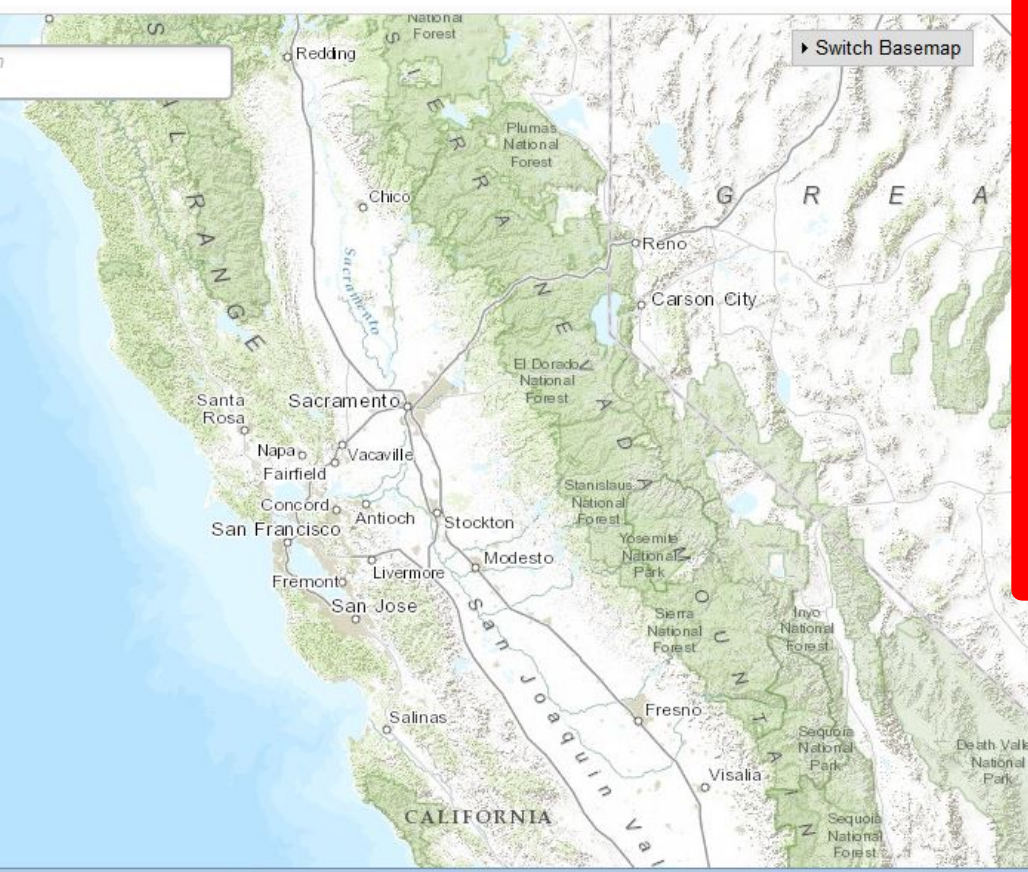
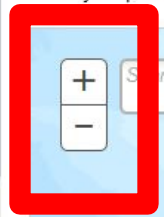
**MAP**

- Used Oil Home
- Recycling/Disposal
- Collection Center Operators
- Generators
- Grantees
- General Public
- Resources
- Events
- Household Hazardous Waste

### Used Oil Recycling Program

## Certified Collection Centers and Oil Payment Program Map

This interactive used oil map details both active and inactive Used Oil Certified Collection Centers (CCC) throughout California. In addition, it represents eligible Jurisdictions who applied and received used oil payments to develop and maintain used oil and used oil filter collection/recycling programs. Payments are calculated per capita and determined annually as part of the State budget process.



**Layers**

- Active CCC Sites
- Inactive CCC Sites
- Active Filter Sites
- Active Non Filter Sites
- Expiration Pending Sites (6 Months)
- Expiration Pending Sites (1 Year)
- Jurisdiction Boundary Lines
- County Boundary Lines
- Participating Jurisdiction By Population
- Jurisdiction By CCC
- Program Applicants
- Program Applicants by Population
- No legend



# Used Oil Recycling Program Certified Collection Centers and Oil Payment Program Map

This interactive used oil map details both active and inactive Used Oil Certified Collection Centers (CCC) throughout California. In addition, it represents eligible Jurisdictions who applied and programs. Payments are calculated per capita and determined annually as part of the State budget process.



### Layers

- Active CCC Sites
- Inactive CCC Sites
- Active Filter Sites
- Active Non Filter Sites
- Expiration Pending Sites (6 Months)
- Expiration Pending Sites (1 Year)
- Jurisdiction Boundary Lines
- County Boundary Lines
- Participating Jurisdiction By Population
  - Jurisdiction By CCC
  - Program Applicants
  - Program Applicants by Population
- No legend



# Used Oil Recycling Program

## Certified Collection Centers and Oil Payment Program Map



This interactive used oil map details both active and inactive Used Oil Certified Collection Centers (CCC) throughout California. In addition, it represents eligible Jurisdictions who applied and programs. Payments are calculated per capita and determined annually as part of the State budget process.



### Layers

- Active CCC Sites
- Inactive CCC Sites
- Active Filter Sites
- Active Non Filter Sites
- Expiration Pending Sites (6 Months)
- Expiration Pending Sites (1 Year)
- Jurisdiction Boundary Lines
- County Boundary Lines
- Participating Jurisdiction By Population
- Jurisdiction By CCC
- Program Applicants
- Program Applicants by Population

#### Active CCC Sites

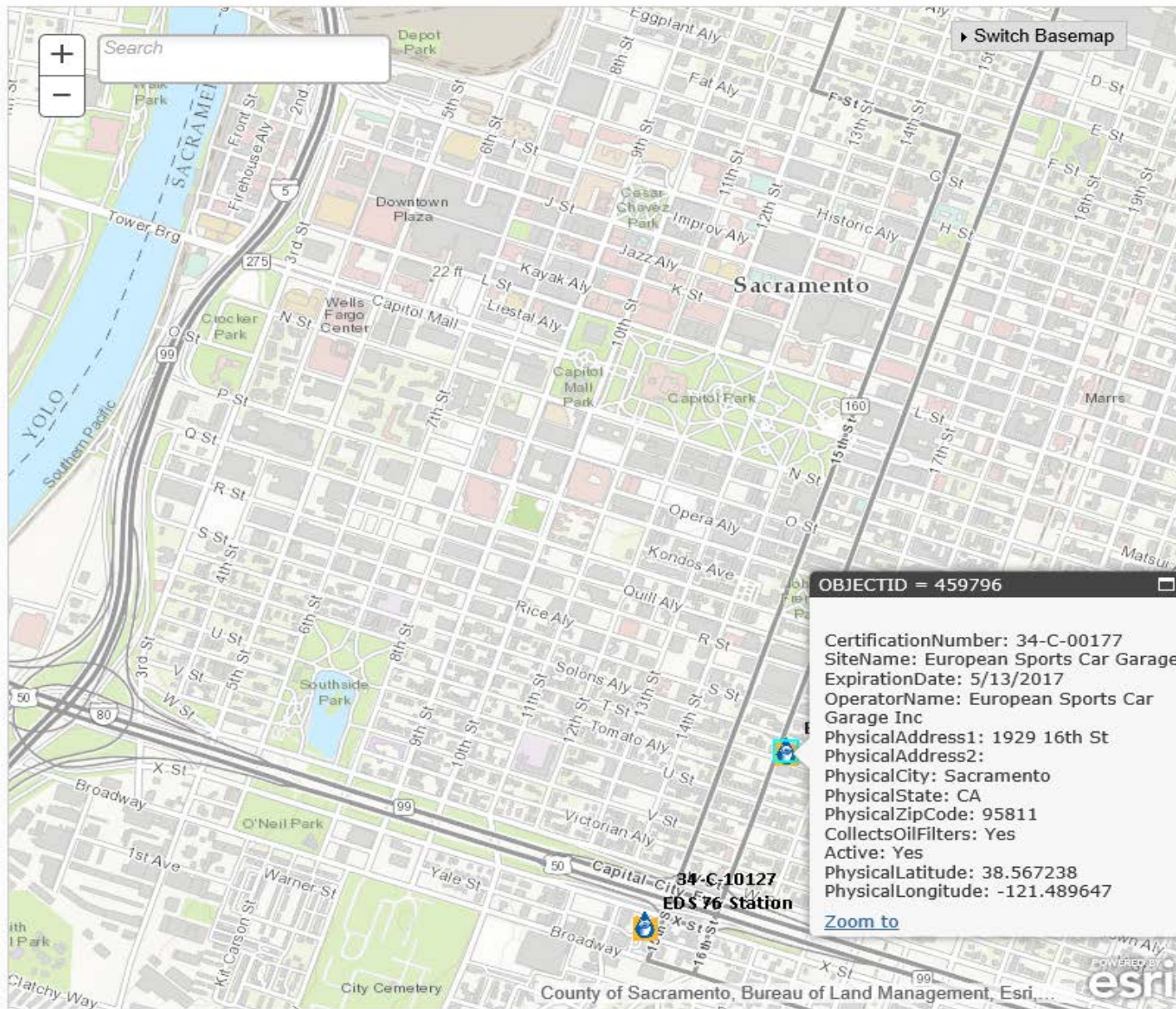
-  Collects Filters And Oil
-  Collects Oil



# Used Oil Recycling Program

## Certified Collection Centers and Oil Payment Program Map

This interactive used oil map details both active and inactive Used Oil Certified Collection Centers (CCC) throughout California. In addition, it represents eligible Jurisdictions who applied a program. Payments are calculated per capita and determined annually as part of the State budget process.



### Layers

- Active CCC Sites
- Inactive CCC Sites
- Active Filter Sites
- Active Non Filter Sites
- Expiration Pending Sites (6 Months)
- Expiration Pending Sites (1 Year)
- Jurisdiction Boundary Lines
- County Boundary Lines
- Participating Jurisdiction By Population
- Jurisdiction By CCC
- Program Applicants
- Program Applicants by Population

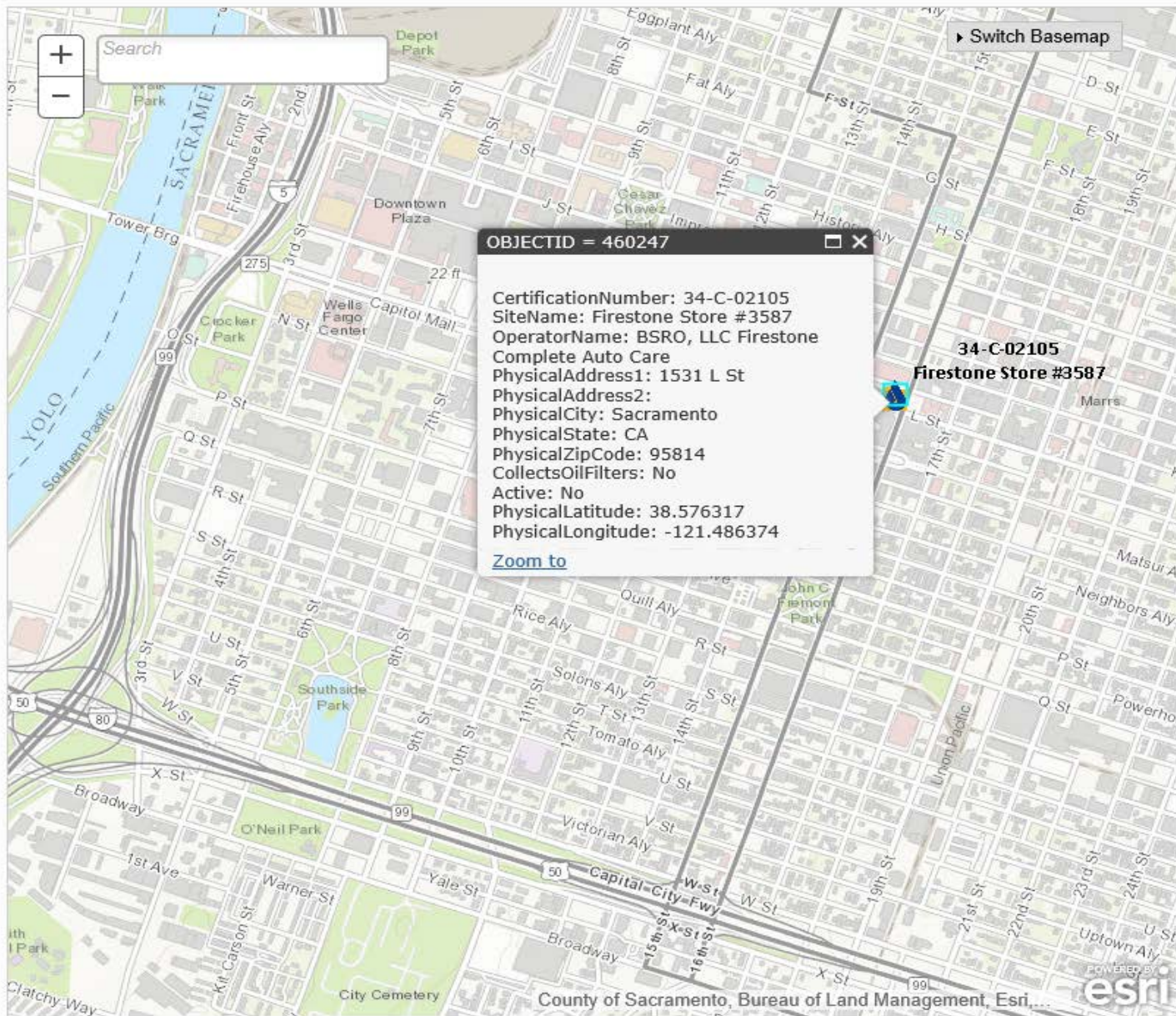
#### Active CCC Sites

- Collects Filters And Oil
- Collects Oil



# Used Oil Recycling Program Certified Collection Centers and Oil Payment Program Map

This interactive used oil map details both active and inactive Used Oil Certified Collection Centers (CCC) throughout California. In addition, it represents eligible Jurisdictions who applied an programs. Payments are calculated per capita and determined annually as part of the State budget process.



### Layers

- Active CCC Sites
- Inactive CCC Sites
- Active Filter Sites
- Active Non Filter Sites
- Expiration Pending Sites (6 Months)
- Expiration Pending Sites (1 Year)
- Jurisdiction Boundary Lines
- County Boundary Lines
- Participating Jurisdiction By Population
- Jurisdiction By CCC
- Program Applicants
- Program Applicants by Population

### Inactive CCC Sites

- Collects Filters And Oil
- Collects Oil





- Used Oil Home
- Recycling/Disposal
- Collection Center Operators
- Generators
- Grantees
- General Public
- Resources
- Events
- Household Hazardous Waste

## Used Oil Recycling Program Certified Collection Centers and Oil Payment Program Map

This interactive used oil map details both active and inactive Used Oil Certified Collection Centers (CCC) throughout California. In addition, it represents eligible Jurisdictions who applied and received used oil payments to develop and maintain used oil and used oil filter collection/recycling programs. Payments are calculated per capita and determined annually as part of the State budget process.

Switch Basemap

**Layers**

- Active CCC Sites
- Inactive CCC Sites
- Active Filter Sites
- Active Non Filter Sites
- Expiration Pending Sites (6 Months)
- Expiration Pending Sites (1 Year)
- Jurisdiction Boundary Lines
- County Boundary Lines
- Participating Jurisdiction
- By Population**
- Jurisdiction By CCC
- Program Applicants
- Program Applicants by Population

**Program Applicants**

- 
- Amador County
- Butte County
- Calaveras County
- Castro Valley Sanitary District
- City and County of San Francisco
- City of Agoura Hills
- City of Alameda



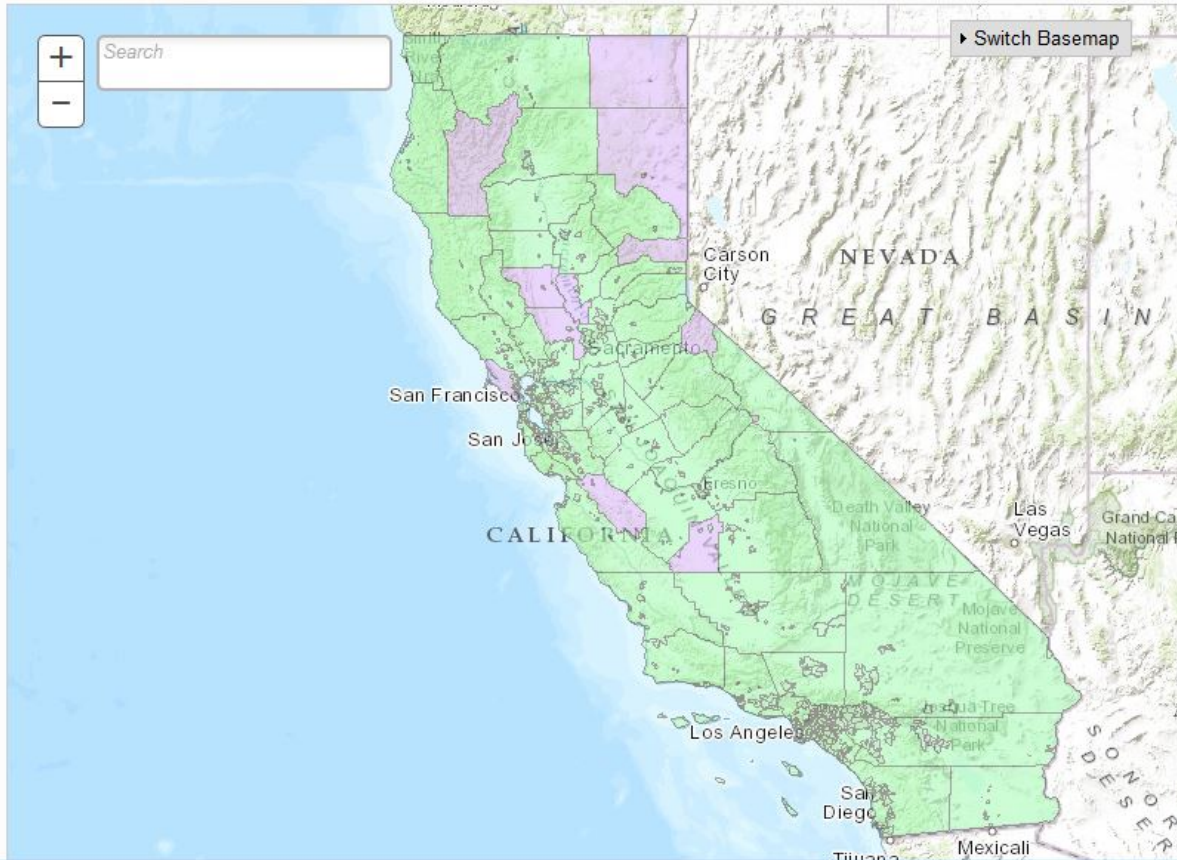


### Used Oil Recycling Program

## Certified Collection Centers and Oil Payment Program Map

This interactive used oil map details both active and inactive Used Oil Certified Collection Centers (CCC) throughout California. In addition, it represents eligible Jurisdictions who applied and received used oil payments to develop and maintain used oil and used oil filter collection/recycling programs. Payments are calculated per capita and determined annually as part of the State budget process.

- Used Oil Home
- Recycling/Disposal
- Collection Center Operators
- Generators
- Grantees
- General Public
- Resources
- Events
- Household Hazardous Waste



Switch Basemap

**Layers**

- Active CCC Sites
- Inactive CCC Sites
- Active Filter Sites
- Active Non Filter Sites
- Expiration Pending Sites (6 Months)
- Expiration Pending Sites (1 Year)
- Jurisdiction Boundary Lines
- County Boundary Lines
- Participating Jurisdiction By Population
- Jurisdiction By CCC
- Program Applicants
- Program Applicants by Population

**Jurisdiction By CCC**

- Does not have CCC
- Has CCC

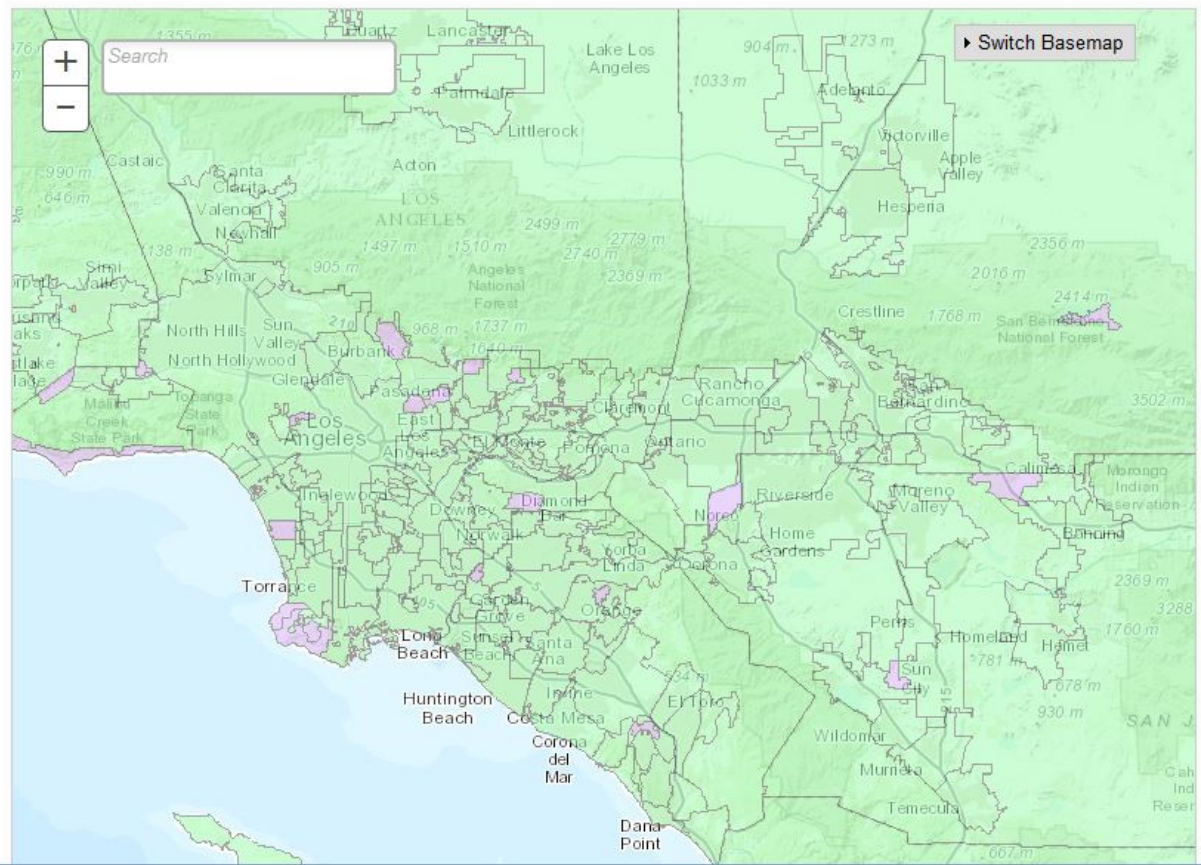




- ➔ [Used Oil Home](#)
- ➔ [Recycling/Disposal](#)
- ➔ [Collection Center Operators](#)
- ➔ [Generators](#)
- ➔ [Grantees](#)
- ➔ [General Public](#)
- ➔ [Resources](#)
- ➔ [Events](#)
- ➔ [Household Hazardous Waste](#)

## Used Oil Recycling Program Certified Collection Centers and Oil Payment Program Map

This interactive used oil map details both active and inactive Used Oil Certified Collection Centers (CCC) throughout California. In addition, it represents eligible Jurisdictions who applied and received used oil payments to develop and maintain used oil and used oil filter collection/recycling programs. Payments are calculated per capita and determined annually as part of the State budget process.



**Layers**

- Active CCC Sites
- Inactive CCC Sites
- Active Filter Sites
- Active Non Filter Sites
- Expiration Pending Sites (6 Months)
- Expiration Pending Sites (1 Year)
- Jurisdiction Boundary Lines
- County Boundary Lines
- Participating Jurisdiction By Population
- Jurisdiction By CCC
- Program Applicants
- Program Applicants by Population

**Jurisdiction By CCC**

- Does not have CCC
- Has CCC





- ➔ [Used Oil Home](#)
- ➔ [Recycling/Disposal](#)
- ➔ [Collection Center Operators](#)
- ➔ [Generators](#)
- ➔ [Grantees](#)
- ➔ [General Public](#)
- ➔ [Resources](#)
- ➔ [Events](#)
- ➔ [Household Hazardous Waste](#)

## Used Oil Recycling Program

### Certified Collection Centers and Oil Payment Program Map

This interactive used oil map details both active and inactive Used Oil Certified Collection Centers (CCC) throughout California. In addition, it represents eligible Jurisdictions who applied and received used oil payments to develop and maintain used oil and used oil filter collection/recycling programs. Payments are calculated per capita and determined annually as part of the State budget process.

+ Search

-

Switch Basemap

**Layers**

- Active CCC Sites
- Inactive CCC Sites
- Active Filter Sites
- Active Non Filter Sites
- Expiration Pending Sites (6 Months)
- Expiration Pending Sites (1 Year)
- Jurisdiction Boundary Lines
- County Boundary Lines
- Participating Jurisdiction By Population
- Jurisdiction By CCC
- Program Applicants
- Program Applicants by Population

**Expiration Pending Sites (1 Year)**

- Collects Filters And Oil
- Collects Oil





- » Used Oil Home
- » Recycling/Disposal
- » Collection Center Operators
- » Generators
- » Grantees
- » General Public
- » Resources
- » Events
- » Household Hazardous Waste

## Used Oil Recycling Program

### Certified Collection Centers and Oil Payment Program Map

This interactive used oil map details both active and inactive Used Oil Certified Collection Centers (CCC) throughout California. In addition, it represents eligible Jurisdictions who applied and received used oil payments to develop and maintain used oil and used oil filter collection/recycling programs. Payments are calculated per capita and determined annually as part of the State budget process.

+ Search

-

Switch Basemap

**Layers**

- Active CCC Sites
- Inactive CCC Sites
- Active Filter Sites
- Active Non Filter Sites
- Expiration Pending Sites (6 Months)
- Expiration Pending Sites (1 Year)
- Jurisdiction Boundary Lines
- County Boundary Lines
- Participating Jurisdiction By Population
- Jurisdiction By CCC
- Program Applicants
- Program Applicants by Population

**Active CCC Sites**

- Collects Filters And Oil
- Collects Oil



# UO.2

What's New in Oil Again:

**Refreshing the  
Used Oil Payment Program**

Wednesday, November 2, 2016

